



Shown with optional 3-car garage and manufactured stone

The Annsley II Model



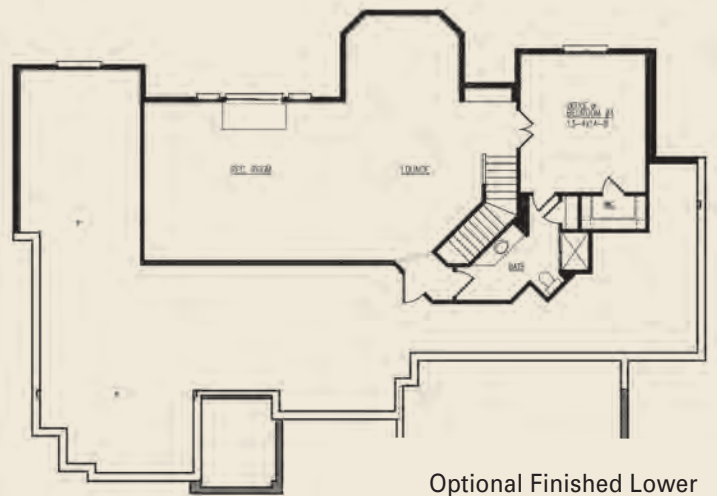
Main Floor
2,528 Sq. Ft.

- 2,528 Sq. Ft., plus 1,104 Sq. Ft. finished lower level
- 4 Bedrooms, 3 1/2 baths
- 3 Car garage

Directions: Hwy 45 to Silver Spring (Co Rd VV), head west. Turn left on Marcy Rd. Left on Ridgeline Trail to model.

Address: N53 W17836 Ridgeline Trail, Menomonee Falls Quail Haven Subdivision

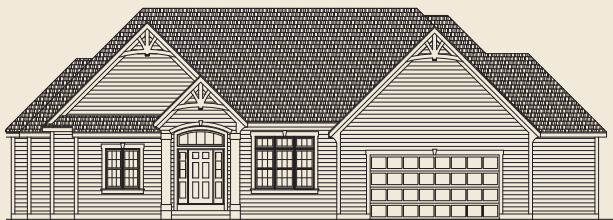
Model Hours: Saturday & Sunday noon to 4 pm, or by appointment. Closed holiday weekends.



Optional Finished Lower Level Adds 1,104 Sq. Ft.



Scan this code with your smart phone to browse the Annsley II's Photo Gallery



Standard elevation



Above and beyond your expectations.